



# AMDEX

MAKING THE CONNECTION



## Voice & Data

[www.amdex.com.au](http://www.amdex.com.au)

Cat.5e

Cat.6

Cat.3

Jacks

Plates

Patch  
Panels



# TABLE of CONTENTS for Structured Wiring

## DATA PRODUCTS

### **Cat. 5e Products**

Cat. 5e Jacks .....	1
Cat. 5e Patch Panels .....	2
Cable Manager .....	2
Cat. 5e Patch Leads .....	5
Cat. 5e Cable Joiners .....	6
Cat.5e Cable Splitters .....	6

### **Cat. 6 Products**

Cat. 6 Jacks .....	3
Cat.6 Patch Panels .....	4
Cable Manager .....	4
Cat. 6 Patch Leads .....	5
Power Rails.....	6

Wall Mount Brackets for 19"Panel .....	5
SOHO Cabinet Mini and 10" Panels .....	8

## VOICE PRODUCTS

Series 600 Sockets .....	10
Series 600 Plugs.....	11
Voice Splitters .....	9
Wall Mounting Plates .....	9
Bulk Flat Cable on Reel .....	..
Modular Plugs .....	12
Modular Surface Mounting Sockets Cat. 3.....	13
Wire Joiners .....	14
Line Cords .....	14
Replacement Handset Cords .....	15
Modular Adaptors.....	16
In-Line Joiners .....	17
D-Sub to Modular.....	18
Tails - Male / Female .....	19
Cable Ties and Grips .....	20
Jacks Cat.3 .....	20-21
Patch Panels Cat.3 .....	21

## FRAMES and ENCLOSURES

Distribution Boxes .....	22
Distribution Box Record Book .....	22
Frames and Covers .....	23-25
Frames and Covers AMFIL .....	24
Jumper Wire .....	25
IDC Modules .....	26
Surface Mounting Boxes for KEYSTONE .....	27-28

## WALL PLATES and INSERTS

AMDEX Wall Plates and Inserts .....	29-30
KEYSTONE Wall Plates and Inserts .....	31
HPM Wall Plate Inserts .....	31
AMDEX Shuttered Wall Plates and Inserts .....	32
AMDEX Multifunction Wall Plates .....	32
Wall Mount Blocks .....	33

## TOOLS and TESTING

Cable Pullers .....	34
Punch-Down Tools.....	34
Cable Strippers .....	35
Cable Strippers and Crimpers for COAX .....	35
Steel Crimp Tool for Modular Plugs .....	36
Optic Fibre Tools.....	36
Test Equipment.....	37

## TELEPHONES

Slim Line Telephone .....	38
---------------------------	----

## ANCILLARY

Line Isolation Units and Side Leads.....	39-40
Loud Sounding Alarms.....	41

WARRANTEE STATEMENT .....	42
---------------------------	----

## DATA PRODUCTS



### Data Jacks for AMDEX® and CLIPSAL® Wall Plates

Part No	Colour	Description
DA103WHT	White	AMDEX® 180° Cat.5e Data Jack
DA103RED	Red	AMDEX® 180° Cat.5e Data Jack
DA103BLK	Black	AMDEX® 180° Cat.5e Data Jack
DA103BLU	Blue	AMDEX® 180° Cat.5e Data Jack
DA103YEL	Yellow	AMDEX® 180° Cat.5e Data Jack
DA103GRN	Green	AMDEX® 180° Cat.5e Data Jack

Suitable for KRONE and 110 Punch-down Tools



### Data Jacks for HPM® Wall Plates

Part No	Colour	Description
DA103H/WHT	White	AMDEX® 180° Cat.5e Data Jack
DA103H/RED	Red	AMDEX® 180° Cat.5e Data Jack
DA103H/BLK	Black	AMDEX® 180° Cat.5e Data Jack
DA103H/BLU	Blue	AMDEX® 180° Cat.5e Data Jack
DA103H/YEL	Yellow	AMDEX® 180° Cat.5e Data Jack
DA103H/GRN	Green	AMDEX® 180° Cat.5e Data Jack

Suitable for KRONE and 110 Punch-down Tools



### Data Jacks for KEYSTONE® Wall Plates

Part No	Colour	Description
DA100WHT	White	KEYSTONE® 90° Cat.5e Data Jack
DA100BLK	Black	KEYSTONE® 90° Cat.5e Data Jack

Suitable for KRONE and 110 Punch-down Tools



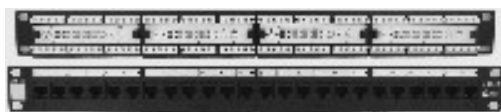
### Data Jacks for KEYSTONE® Wall Plates

Part No	Colour	Description
DA101WHT	White	KEYSTONE® 180° Cat.5e Data Jack
DA101BLK	Black	KEYSTONE® 180° Cat.5e Data Jack

Suitable for KRONE and 110 Punch-down Tools

## DATA PRODUCTS

### PATCH PANEL Cat.5e 19"



Part No	Type	Description
DA200	24 Port	AMDEX® Cat.5e Patch Panel
DA212	16 Port	AMDEX® Cat.5e Patch Panel

- Suitable for KRONE and 110 Punch-down tools
- Supplied with caged nuts

### PATCH PANEL Cat.5e UNEQUIPPED 19"



Part No	Type	Description
DA212uneq	16 Port	Patch Panel unequipped <ul style="list-style-type: none"> <li>• Supplied with bezels</li> <li>• Suitable for 90° or 180° KEYSTONE® Jacks</li> </ul>
DABEBK	Black	KEYSTONE® Bezels



### MINI PATCH PANEL Cat.5e

Part No	Colour	Description
DA201	White	AMDEX® 1U Cat.5e 12 Port with Wall Mount Bracket



### CABLE MANAGER Cat.5e 19"

Part No	Colour	Description
DA207	Black	AMDEX® 1UCable Manager for Cat.5e and Cat.6

### PATCH PANEL 10" Cat.5e



Part No	Colour	Description
DA10-12P-C5e	Black	AMDEX® 12 port 10" Panel for DA-CAB-Mini 6RU
DA10-8P-C5e	Black	AMDEX® 8 port 10" Panel for DA-CAB Mini 6RU

## DATA PRODUCTS

### Cat.6 Data Jacks for AMDEX® and CLIPSAL® Wall Plates



Part No	Colour	Description
DA600/WHT	White	AMDEX® 180° Cat.6 Data Jack
DA600/RED	Red	AMDEX® 180° Cat.6 Data Jack
DA600/BLK	Black	AMDEX® 180° Cat.6 Data Jack
DA600/BLU	Blue	AMDEX® 180° Cat.6 Data Jack
DA600/YEL	Yellow	AMDEX® 180° Cat.6 Data Jack
DA600/GRN	Green	AMDEX® 180° Cat.6 Data Jack

Suitable for KRONE and 110 Punch-down Tools

### Cat.6 Data Jacks for HPM® Wall Plates



Part No	Colour	Description
DA600H/WHT	White	AMDEX® 180° Cat.6 Data Jack
DA600H/RED	Red	AMDEX® 180° Cat.6 Data Jack
DA600H/BLK	Black	AMDEX® 180° Cat.6 Data Jack
DA600H/BLU	Blue	AMDEX® 180° Cat.6 Data Jack
DA600H/YEL	Yellow	AMDEX® 180° Cat.6 Data Jack
DA600H/GRN	Green	AMDEX® 180° Cat.6 Data Jack

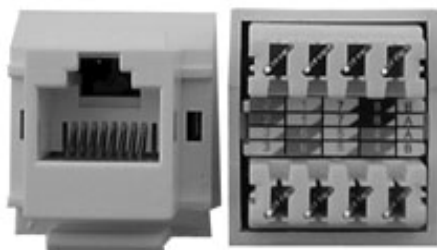
Suitable for KRONE and 110 Punch-down Tools



### Cat.6 Data Jacks for KEYSTONE® Wall Plates

Part No	Colour	Description
DA601/WHT	White	KEYSTONE® 90° Cat.5e Data Jack
DA601/BLK	Black	KEYSTONE® 90° Cat.5e Data Jack

Suitable for KRONE and 110 Punch-down Tools



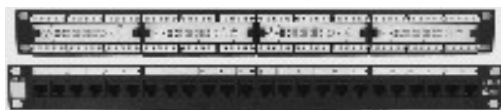
### Cat.6 Data Jacks for KEYSTONE® Wall Plates

Part No	Colour	Description
DA602/WHT	White	KEYSTONE® 180° Cat.5e Data Jack
DA602/BLK	Black	KEYSTONE® 180° Cat.5e Data Jack

Suitable for KRONE and 110 Punch-down Tools

## DATA PRODUCTS

### PATCH PANEL Cat.6 19"



Part No	Type	Description
DA620	24 Port	AMDEX® Cat.6 Patch Panel
DA621	16 Port	AMDEX® Cat.6 Patch Panel

Suitable for KRONE and 110 Punch-down Tools

### PATCH PANEL Cat.6 UNEQUIPPED 19"



Part No	Type	Description
DA212uneq	16 Port	Patch Panel unequipped <ul style="list-style-type: none"> <li>Supplied with bezels</li> <li>Suitable for 90° or 180° KEYSTONE® Jacks</li> </ul>
DABEZBK	Black	KEYSTONE® Bezels

Suitable for KRONE and 110 Punch-down Tools

### MINI PATCH PANEL Cat.6



Part No	Colour	Description
DA623	White	AMDEX® 1U Cat.6e 12 Port with Wall Mount Bracket

### CABLE MANAGER Cat.6 19"



Part No	Colour	Description
DA207	Black	AMDEX® 1U Cable Manager for Cat.5e and Cat.6

### PATCH PANEL 10" Cat.6



Part No	Colour	Description
DA10-12P-C6	Black	AMDEX® 12 port 10" Panel for DA-CAB-Mini 6RU
DA10- 8P-C6	Black	AMDEX® 8 port 10" Panel for DA-CAB Mini 6RU



## DATA PRODUCTS



### PATCH LEADS Cat.5e

Part No	Length	Colour	Xxx = BLU/GRY/RED/YEL/GRN/BLK
PL05Xxx	0.5M	Blue/Grey/Red/Yellow/Green/Black	
PL10Xxx	1.0M	Blue/Grey/Red/Yellow/Green/Black	
PL15Xxx	1.5M	Blue/Grey/Red/Yellow/Green/Black	
PL20Xxx	2.0M	Blue/Grey/Red/Yellow/Green/Black	
PL30Xxx	3.0M	Blue/Grey/Red/Yellow/Green/Black	
PL50Xxx	5.0M	Blue/Grey/Red/Yellow/Green/Black	
PL100Xx	10.0M	Blue/Grey/Red/Yellow/Green/Black	
PL10RED#	1.0M	Cross Connect	Red
PL20RED#	2.0M	Cross Connect	Red
PL30RED#	3.0M	Cross Connect	Red

LONGER LEADS TO ORDER



### PATCH LEADS Cat.6

Part No	Length	Colour	Xxx = BLU/GRY/RED/YEL/GRN/BLK
PL6-05Xxx	0.5M	Blue/Grey/Red/Yellow/Green/Black	
PL6-10Xxx	1.0M	Blue/Grey/Red/Yellow/Green/Black	
PL6-15Xxx	1.5M	Blue/Grey/Red/Yellow/Green/Black	
PL6-20Xxx	2.0M	Blue/Grey/Red/Yellow/Green/Black	
PL6-30Xxx	3.0M	Blue/Grey/Red/Yellow/Green/Black	
PL6-50Xxx	5.0M	Blue/Grey/Red/Yellow/Green/Black	
PL6-100Xx	10.0M	Blue/Grey/Red/Yellow/Green/Black	



### WALL MOUNT BRACKETS for 19" PANELS

Part No	Colour	Description
DABRACKET2	Black	2U Hinged Wall Mount bracket Depth 150mm
DABRACKET4	Black	4U Hinged Wall Mount bracket Depth 150mm
DABRACKET6	Black	6U Hinged Wall Mount bracket Depth 150mm



**POWER RAILS**


Part No	Length		
<b>PR-8HA</b>	19"	8 Outlet 3M lead	Horizontal
<b>PR-10-VA</b>	22"	10 Outlet 3M lead	Vertical
<b>PR-15-VA</b>	30.5"	15 Outlet 3M lead	Vertical
<b>Pr-20-VA</b>	39.5	20 Outlet 3M lead	Vertical

## DATA PRODUCTS



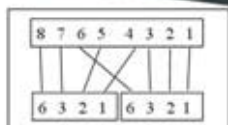
### CABLE JOINERS Cat.5e

Part No	Colour	Description
DA215	White	Cat.5e Inline Cable Joiner with IDC Punch-down



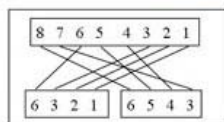
### CABLE JOINERS Cat.5e

Part No	Colour	Description
DAILC	White	Cat.5e Inline Cable Joiner RJ45-RJ45



### SPLITTERS Cat.5e

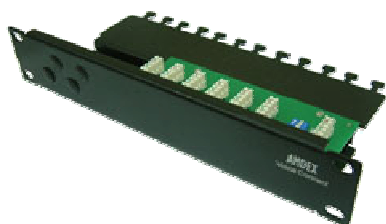
Part No	Colour	Description
DASPLIT1	Black	Data /Data Splitter



### SPLITTERS Cat.5e

Part No	Colour	Description
DASPLIT2	White	Data / Voice Splitter

## DATA PRODUCTS



### SOHO CABINET MINI for 10" PANELS

Part No	Colour	Description
DA-CAB-6RU Mini	Black	Cabinet mini for 10" Panels 285Wx 330Hx 200D
DA-CAB-9RU Mini	Black	Cabinet mini for 10" Panels 285Wx 460Hx 200D

### 10" PANELS CABLE MANAGER

Part No	Colour	Description
DA10-207	Black	Panel 10" Cable Manager for Mini Cabinet

### 10" PANELS UNEQUIPPED HEXAGONAL

Part No	Type	Description
DA10-HEX	10 Port	AMDEX ® Panel 10" Unequipped Hexagonal for F, PAL, BNC,SMA

### 10" PANELS UNEQUIPPED

Part No	Type	Description
DA10-BEZ	8 Port	AMDEX ® Panel 10" Unequipped Keystone

### 10" PANELS BLANK

Part No	Type	Description
DA10-BLANK		AMDEX ® Panel 10" Blank

### 10" PANELS Cat5e

Part No	Type	Description
DA10-8p-C5e	8 Port	AMDEX ® Panel 10" for Mini Cabinet
DA10-12p-C5e	12 Port	AMDEX ® Panel 10" for Mini Cabinet

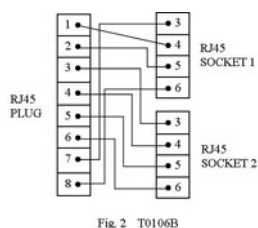
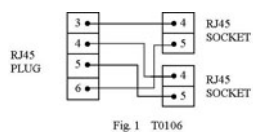
### 10" PANELS Cat6

Part No	Type	Description
DA10-8P-C6	8 Port	AMDEX ® Panel 10" for Mini Cabinet
DA10-12P-C6	12 Port	AMDEX ® Panel 10" for Mini Cabinet

### 10" PANELS VOICE CONNECT 4LINES / 6 EXTENSIONS

Part No	Description
DA10-Voice Connect	AMDEX ® Panel 10" 4 Exchange Lines with 6 Extensions per Line

## VOICE PRODUCTS



### VOICE SPLITTERS

Part No	Colour	Description
<b>T0106</b>	Ivory	Voice Splitter Refer to Drawing

### VOICE SPLITTERS

Part No	Colour	Description
<b>T0106B</b>	Ivory	Voice Splitter Refer to Drawing

### WALL MOUNTING PLATES

Part No	Colour	Description
<b>T0006</b>	White	Telephone Wall Mounting Plates 6P4C Includes:- <ul style="list-style-type: none"><li>170mm Lead</li><li>Screw Terminals</li></ul>

### BULK FLAT CABLE on REEL

Part No	Colour	Description
<b>T0159ASH/100</b>	Ash	100 metre Reel 4 conductor
<b>T0159ASH/500</b>	Ash	500 metre Reel 4 conductor
<b>T0159BLK/100</b>	Black	100 metre Reel 4 conductor
<b>T0159BLK/500</b>	Black	500 metre Reel 4 conductor
<b>T0159IVY/100</b>	Ivory	100 metre Reel 4 conductor
<b>T0159IVY/500</b>	Ivory	500 metre Reel 4 conductor
<b>T0161/100</b>	Ivory	100 metre Reel 6 conductor
<b>T0161/500</b>	Ivory	500 metre Reel 6 conductor
<b>T0162/100</b>	Ivory	100 metre Reel 8 conductor
<b>T0162/250</b>	Ivory	250 metre Reel 8 conductor
<b>T0163/100</b>	Black	100 metre Reel 8 conductor
<b>T0163/250</b>	Black	250 metre Reel 8 conductor

## VOICE PRODUCTS



### SERIES 600 SOCKETS

Part No	Colour	Description
T0001/4	Ivory	610 Standard Socket



### SERIES 600 SOCKETS

Part No	Colour	Description
T0001/4/W	White	610 Standard Socket



### SERIES 600 SOCKETS

Part No	Colour	Description
T0155A	Ivory	611 Socket



### SERIES 600 SOCKETS

Part No	Colour	Description
T0001M	Ivory	S610M Socket Inline with 6P4C Modular Socket



### SERIES 600 SOCKETS

Part No	Colour	Description
T0002	Ivory	610 / 611 Adhesive Backed Mounting Plate



### SERIES 600 SOCKETS

Part No	Colour	Description
T0003	Ivory	610 / 611 Stacking Plate

## VOICE PRODUCTS



### SERIES 600 PLUGS

Part No	Colour	Description
<b>T0005</b>	Ivory	P606M/4—P606 plug with 6P4C Modular Adaptor



### SERIES 600 PLUGS

Part No	Colour	Description
<b>T0011</b>	Ivory	P606M/2—P606 plug with 6P2C Modular Adaptor



### SERIES 600 PLUGS

Part No	Colour	Description
<b>T0105</b>	Ivory	P608M/4—P606 plug with 8P4C Modular Adaptor



### SERIES 600 PLUGS

Part No	Colour	Description
<b>T0195/1</b>	Ivory	P605 to 1x 6P4C Socket + 610 Adaptor



### SERIES 600 PLUGS

Part No	Colour	Description
<b>T0195/2</b>	Ivory	P605 to 2x 6P4C Socket Adaptor



### SERIES 600 PLUGS

Part No	Colour	Description
<b>T0195</b>	Ivory	Standard Telephone Double Adaptor

## VOICE PRODUCTS

### MODULAR PLUGS



Part No	Description
<b>T0017</b>	4P4C - flat stranded
<b>T0016</b>	6P4C - flat stranded <i>(can be used in 8P8C and 6P jacks)</i>
<b>T0087</b>	6P6C - flat stranded
<b>T0086</b>	6P6C - round solid conductor
<b>T0086/6P4C</b>	6P4C - round solid conductor
<b>T0086/6P2C</b>	6P2C - round solid conductor
<b>T0084</b>	8P4C - flat stranded
<b>T0059</b>	8P8C - flat stranded
<b>T0083</b>	8P8C - round stranded
<b>T0083/SHIELD</b>	8P8C - round, shielded for solid and stranded conductor
<b>T0085</b>	8P8C - 50U round solid for solid conductor
<b>T00831</b>	8P8C - short body
<b>T0090</b>	10P10C - stranded
<b>T0089</b>	6P6C - DEC type
<b>T0088</b>	6P4C - BT
<b>T0083/C6</b>	8P8C - Cat.6 round stranded
<b>T0085/C6</b>	8P8C - Cat.6 round solid



## VOICE PRODUCTS



### MODULAR SURFACE MOUNTING SOCKETS Cat.3

Part No	Description
<b>T0081</b>	6P6C Surface Mount Box Mini with screw terminals



### MODULAR SURFACE MOUNTING SOCKETS Cat.3

Part No	Description
<b>T0081/6P2C</b>	6P2C Surface Mount Box Mini with screw terminals



### MODULAR SURFACE MOUNTING SOCKETS Cat.3

Part No	Description
<b>T0082</b>	6P6C Surface Mount Box with screw terminals



### MODULAR SURFACE MOUNTING SOCKETS Cat.3

Part No	Description
<b>DT64/GEL</b>	6P4C - Surface Mount Box IDC Gel Filled Suitable for Krone



### MODULAR SURFACE MOUNTING SOCKETS Cat.3

Part No	Description
<b>T0082/RJ31</b>	6P4C Surface Mount Box RJ31 Switching Jack with screw terminals



### MODULAR SURFACE MOUNTING SOCKETS Cat.3

Part No	Description
<b>T0095/RJ31</b>	8P8C Surface Mount Box RJ31 Switching Jack with screw terminals



### MODULAR SURFACE MOUNTING SOCKETS Cat.3

Part No	Description
<b>T0095</b>	8P8C Surface Mount Box with screw terminals

## VOICE PRODUCTS



### WIRE JOINERS

Part No	Description
F-UY-2	2 Wire Gel Filled UY - 2



### WIRE JOINERS

Part No	Description
F-UR-3	3 Wire Gel Filled UR - 3



### WIRE JOINERS

Part No	Description
F-UY-tool	Compression Tool for UY and UR Connectors

### LINECORDS

Part No	Colour	Description
T0154	Ash	3 metre 4 conductor 6P4C-6P4C
T0154/2	Ash	3 metre 2 conductor 6P2C-6P2C
T0118ASH	Ash	2 metre 2 conductor 6P2C-6P4C
T0098	Black	3 metre 4 conductor 6P4C-8P4C
T0098ASH	Ash	3 metre 4 conductor 6P4C-8P4C
T0171	Ivory	5 metre 4 conductor 6P4C-6P4C
T0172	Ivory	10 metre 4 conductor 6P4C-6P4C

## VOICE PRODUCTS

### REPLACEMENT HANDSET CORDS

Part No	Colour	Description
T0009		Commander® BN
T0009A		Commander® AN
T0076 GRY	Grey	Commander® D and E
		TF200 / TF400
T0051LTGRY	Lt Grey	Nortel®
T0178BLK	Black	Nortel®
T0178BGE	Beige	Nortel®
T0178CHAR	Charcoal	Nortel®
T0178WHT	White	Nortel®
T0052CRM	Cream	Fujitsu®
T0077CHAR	Charcoal	Samsung®
T0073WHT	White	Ericsson®
T0132BLK	Black	Ericsson®
T0133BGE	Beige	Ericsson®
T0134BUR	Burgundy	Ericsson®
T0192GRY	Grey	Ericsson®
T0116LTGRY	Lt Grey	Aria®
T0175		HX Handset Cord
T00176		BN Adaptor
T0188		D Term 6
T0189		D Term 5

### GENERIC HANDSET CORDS

Part No	Colour	Description
T0078BLK	Black	3 Metre
T0004WHT	White	3 Metre
T0116LT GRY	Lt Grey	3 Metre
T0183CRM	Cream	3 Metre
T0004BGE	Beige	3 Metre
T0191BLK	Black	3 Metre
T0191WHT	White	5 Metre
T0191CRM	Cream	5 Metre
T0191OFFWHT	Off White	5 Metre
T0191/LTGRY	Lt Grey	5 Metre

## VOICE PRODUCTS



### MODULAR ADAPTORS

Part No	Description
T0193	6P6C Modular Double Adaptor



### MODULAR ADAPTORS

Part No	Description
T0193/8	8P8C Modular Double Adaptor



### MODULAR ADAPTORS

Part No	Description
T0194	6P6C 3 way Coupler



### MODULAR ADAPTORS

Part No	Description
T0194/8	8P8C 3 way Coupler



### MODULAR ADAPTORS

Part No	Description
T0193/LEAD	6P Double Adaptor with 100mm Lead



### MODULAR ADAPTORS

Part No	Description
T0106D	8P Double Adaptor with 100mm Lead

## VOICE PRODUCTS



### IN-LINE JOINER

Part No	Description
T0142	6P6C pin 1 - pin 1



### IN-LINE JOINER

Part No	Description
T0070	8P8C pin 1 - pin 1



### IN-LINE JOINER

Part No	Colour	Description
T0092	Ivory	6 way to 4 way Reducing Sleeve



### IN-LINE JOINER

Part No	Colour	Description
T0091	White	8 way to 6 way Reducing Sleeve

## VOICE PRODUCTS



### D-SUB to MODULAR

Part No	Description
DB25F	DB25 Female - RJ45



### D-SUB to MODULAR

Part No	Description
DB25M	DB25 Male - RJ45



### D-SUB to MODULAR

Part No	Description
DB9F	DB9 Female - RJ45



### D-SUB to MODULAR

Part No	Description
DB9M	DB9 Male - RJ45

## VOICE PRODUCTS



### TAILS

Part No	Length	Description
F-AMPM5	5 metre	Male to Male
F-AMPM10	10 metre	Male to Male
F-AMPF5	5 metre	Female to Female
F-AMPF10	10 metre	Female to Female
F-AMPLOK		AMP Locking Latch

Tail lengths can be made to order



### CABLE TIES Nylon

Part No	Colour	Dimensions
CT150BLK	Black	150mm x 3.5mm 100 pc / bag
CT150WHT	White	150mm x 3.5mm 100 pc / bag
CT200BLK	Black	200mm x 4.8mm 100 pc / bag
CT200WHT	White	200mm x 4.8mm 100 pc / bag
CT 300BLK	Black	300mm x 4.8mm 100 pc / bag
CT300WHT	White	300mm x 4.8mm 100 pc / bag
CT350BLK	Black	350mm x 4.7mm 100 pc / bag
CT350WHT	White	350mm x 4.7mm 100 pc / bag
CT365BLK	Black	365mm x 7.6mm 100 pc / bag
CT750BLK	Black	750mm x 8.8mm 100 pc / bag
CT750WHT	White	750mm x 8.8mm 100 pc / bag



### CABLE TIES Grip Ties

Part No	Length	Dimensions
CTG-10M/12mm	10M	Grip Tie Roll 12mm
CTG-10M/19mm	10M	Grip Tie Roll 19mm



## VOICE PRODUCTS



**Voice Jacks for AMDEX® and CLIPSAL® Wall Plates**

Part No	Colour	Type	Description
DT100/WHT	White	8P4C	AMDEX® 180° Cat.3 Voice Jack
DT100/BLU	Blue	8P4C	AMDEX® 180° Cat.3 Voice Jack
DT103BLK	Black	8P4C	AMDEX® 180° Cat.3 Voice Jack



**Voice Jacks for AMDEX® and CLIPSAL® Wall Plates**

Part No	Colour	Type	Description
DT100/2/WHT	White	8P2C	AMDEX® 180° Cat.3 Voice Jack



**Voice Jacks for AMDEX® and CLIPSAL® Wall Plates**

Part No	Colour	Type	Description
DT1006P	White	6P4C	AMDEX® 180° Cat.3 Voice Jack



**Voice Jacks for HPM® Wall Plates**

Part No	Colour	Type	Description
DT100H/WHT	White	8P4C	AMDEX® 180° Cat.3 Voice Jack
DT100H/BLU	Blue	8P4C	AMDEX® 180° Cat.3 Voice Jack
DT100H/BLK	Black	8P4C	AMDEX® 180° Cat.3 Voice Jack



**Voice Jacks for HPM® Wall Plates**

Part No	Colour	Type	Description
DT100H/2/WHT	White	8P2C	AMDEX® 180° Cat.3 Voice Jack



**Voice Jacks for HPM® Wall Plates**

Part No	Colour	Type	Description
DT100H/6P	White	6P4C	AMDEX® 180° Cat.3 Voice Jack

## VOICE PRODUCTS



### Voice Jacks for KEYSTONE® Wall Plates

Part No	Colour	Type	Description
DT64/WHT	White	8P4C	KEYSTONE® 90° Cat.3 Jack



### Voice Jacks for KEYSTONE® Wall Plates

Part No	Colour	Type	Description
DT101/LTGRY	Light Grey	8P4C	KEYSTONE® 90° Cat.3 Jack



### Voice Jacks for KEYSTONE® Wall Plates

Part No	Colour	Type	Description
DT64/2/WHT	White	8P4C	KEYSTONE® 180° Cat.3 Jack



### Voice Jacks for KEYSTONE® Wall Plates

Part No	Colour	Type	Description
DT101/2/WHT	White	8P2C	KEYSTONE® 180° Cat.3 Jack



### PATCH PANEL Cat.3 19"

Part No	Type	Description
DTP50	50 Port	AMDEX® 1U Cat.3 Patch Panel

Suitable for KRONE® and 110 Punch-down Tools

## FRAMES and ENCLOSURES



### DISTRIBUTION BOXES

Part No	Type	Description
<b>F10PB</b>	10 Pair Box	Low Profile Embedded Module with Snap Cover



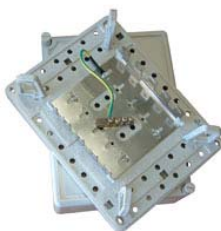
### DISTRIBUTION BOXES

Part No	Type	Description
<b>F30PB</b>	30 Pair Box	Standard Back Mount Frame with Snap Cover



### DISTRIBUTION BOXES

Part No	Type	Description
<b>F30REC</b>	30 Pair Box	Frame in Flush Recessed Steel Box with Lock



### DISTRIBUTION BOXES

Part No	Type	Description
<b>F50PBA</b>	50 Pair Box	Standard Back Mount Frame with removable cover



### DISTRIBUTION BOXES

Part No	Type	Description
<b>F100PB</b>	100 Pair Box	Standard Back Mount Frame with removable cover



### DISTRIBUTION BOXES

Part No	Type	Description
<b>F-DBR/700</b>	700 Pair	Distribution Box Record Book
<b>F-DBR/270</b>	270 Pair	Distribution Box Record Book
<b>F-DBR/110</b>	110 Pair	Distribution Box Record Book
<b>F-DBR/50</b>	50 Pair	Distribution Box Record Book
<b>F-DBR/10</b>	10 Pair	Distribution Box Record Card

## FRAMES and ENCLOSURES



### FRAMES and COVERS

Part No	Type	Description
<b>F11</b>	11 Way	Back Mount Frame



### FRAMES and COVERS

Part No	Type	Description
<b>F11C</b>	11 Way	Metal Cover



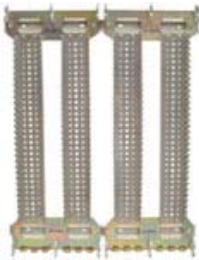
### FRAMES and COVERS

Part No	Type	Description
<b>F27</b>	27 Way	Back Mount Frame



### FRAMES and COVERS

Part No	Type	Description
<b>F27C</b>	27 Way	Metal Cover



### FRAMES and COVERS

Part No	Type	Description
<b>F66</b>	66 Way	Frame

## FRAMES and ENCLOSURES



### FRAMES and COVERS AMFIL

Part No	Type	Description
F-10PDM/AMFIL	10 Pair	Disconnect Module



### FRAMES and COVERS AMFIL

Part No	Type	Description
F11A	11Way	Frame AMFIL



### FRAMES and COVERS AMFIL

Part No	Type	Description
F27A	27Way	Frame AMFIL

### FRAMES and COVERS

Part No	Type	Description
F-RB15	15 Way	Recessed Back Mount Frame 19"



### FRAMES and COVERS

Part No	Type	Description
F1	1 Position	Back Mount



### FRAMES and COVERS

Part No	Type	Description
F3	3 Position	Back Mount



### FRAMES and COVERS

Part No	Type	Description
F5	5 Position	Back Mount

## FRAMES and ENCLOSURES



### FRAMES and COVERS

Part No	Description
F-LH	Label Holder - Hinged



### FRAMES and COVERS

Part No	Description
F-LHA	Label Holder - Back Mount Position



### FRAMES and COVERS

Part No	Description
F-EB	Earth Bar



### JUMPER WIRE

Part No	Length	Dimensions
DA-CABLE-JUMP-R&W	250 M	Jumper Wire Red and White
DA-CABLE-JUMP-B&W	250 M	Jumper Wire Blue and White
DA-CABLE-JUMP-G&W	250 M	Jumper Wire Green and White
DA-CABLE-JUMP-P&B	250 M	Jumper Wire Purple and Brown

## FRAMES and ENCLOSURES



### IDC MODULES

Part No	Type	Description
<b>F5PDM</b>	5 Pair	Disconnect Module <i>(flanged for screw fitting)</i>



### IDC MODULES

Part No	Type	Description
<b>F10PDM</b>	10 Pair	Disconnect Module



### IDC MODULES

Part No	Type	Description
<b>F10PDM-G</b>	10 Pair	Disconnect Module with Gas Discharge Tube Protection



### IDC MODULES

Part No	Type	Description
<b>F10PME</b>	Red	10 Pair Earth Module



### IDC MODULES

Part No	Type	Description
<b>Flag1-10</b>	1-10	Marking Flags



### IDC MODULES

Part No	Type	Description
<b>Flag 10-100</b>	10 -100	Marking Flags



## FRAMES and ENCLOSURES



### SURFACE MOUNTING BOXES-UNEQUIPPED FOR 90°KEYSTONE® JACKS

Part No	Type	Description
DA203	Single	Port Box



### SURFACE MOUNTING BOXES-UNEQUIPPED FOR 90°KEYSTONE® JACKS

Part No	Type	Description
DA203SH	Single	Port Box Shuttered



### SURFACE MOUNTING BOXES-UNEQUIPPED FOR 90°KEYSTONE® JACKS

Part No	Type	Description
DA203/ID	Single	Port Box with Identifying Window



### SURFACE MOUNTING BOXES-UNEQUIPPED FOR 90°KEYSTONE® JACKS

Part No	Type	Description
DA205	Double	Port Box



### SURFACE MOUNTING BOXES-UNEQUIPPED FOR 90°KEYSTONE® JACKS

Part No	Type	Description
DA205SH	Double	Port Box Shuttered



### SURFACE MOUNTING BOXES-UNEQUIPPED FOR 90°KEYSTONE® JACKS

Part No	Type	Description
DA205/ID	Double	Port Box with Identifying Window

## FRAMES and ENCLOSURES



### SURFACE MOUNTING BOXES-UNEQUIPPED FOR 90°KEYSTONE® JACKS

Part No	Type	Description
DA209	Four	Port Box



### SURFACE MOUNTING BOXES-UNEQUIPPED FOR 90°KEYSTONE® JACKS

Part No	Type	Description
DA208	Six	Port Box



### SURFACE MOUNTING BOXES-UNEQUIPPED FOR 90°KEYSTONE® JACKS

Part No	Type	Description
DA210	Eight	Port Box

## WALL PLATES and INSERTS

### AMDEX® WALL PLATES and INSERTS

#### AMDEX® Wall Plates

- are a slimline 8mm two piece plate of Australian Design
- will accept Amdex® Cat.5e and Cat.3 Data and Voice Jacks
- will accept other leading manufacture's Jacks Krone® FMK® Panduit®
- available in 1-2-3-4-6 Port styles
- will accept Keystone® Connectors 1-2 Port
- supplied with two mounting screws
- Pewter Finish is scratch resistant



### AMDEX® WALL PLATES

Part No	Colour	Description
<b>T0143</b>	White	AMDEX® Wall Plate One Port
<b>T0143MF</b>	Pewter	AMDEX® Wall Plate One Port



### AMDEX® WALL PLATES

Part No	Colour	Description
<b>T0144</b>	White	AMDEX® Wall Plate Two Port
<b>T0144MF</b>	Pewter	AMDEX® Wall Plate Two Port



### AMDEX® WALL PLATES

Part No	Colour	Description
<b>T0160</b>	White	AMDEX® Wall Plate Three Port
<b>T0160MF</b>	Pewter	AMDEX® Wall Plate Three Port



### AMDEX® WALL PLATES

Part No	Colour	Description
<b>T0179</b>	White	AMDEX® Wall Plate Four Port
<b>T0160MF</b>	Pewter	AMDEX® Wall Plate Four Port



### AMDEX® WALL PLATES

Part No	Colour	Description
<b>T0180</b>	White	AMDEX® Wall Plate Six Port
<b>T0180MF</b>	Pewter	AMDEX® Wall Plate Six Port

## WALL PLATES and INSERTS



### INSERTS for AMDEX® and CLIPSAL® WALL PLATES

Part No	Colour	Description
<b>T0168</b>	White	Wall Plate Insert    Blank



### INSERTS for AMDEX® and CLIPSAL® WALL PLATES

Part No	Colour	Description
<b>T0169</b>	White	Wall Plate Insert    F to F Connector



### INSERTS for AMDEX® and CLIPSAL® WALL PLATES

Part No	Colour	Description
<b>T0170</b>	White	Wall Plate Insert    F to PAL Connector



### INSERTS for AMDEX® and CLIPSAL® WALL PLATES

Part No	Colour	Description
<b>T0200/R+W</b>	Pair Red +White	Wall Plate Insert    RCA Solder



### INSERTS for AMDEX® and CLIPSAL® WALL PLATES

Part No	Colour	Description
<b>T0200/YEL</b>	Yellow	Wall Plate Insert    RCA Solder



### INSERTS for AMDEX® and CLIPSAL® WALL PLATES

Part No	Colour	Description
<b>T0200BP/R+W</b>	Pair Red +White	Wall Plate Insert    Plug / Binding Post

## WALL PLATES and INSERTS



### INSERTS for HPM®

Part No	Colour	Description
T0169/HPM	White	Wall Plate Insert F to F Connector



### INSERTS for HPM®

Part No	Colour	Description
T0170/HPM	White	Wall Plate Insert F to PAL Connector



### KEYSTONE® WALL PLATES and INSERTS

Part No	Colour	Description
T0100	White	KEYSTONE ® Wall Plate One Port



### KEYSTONE® WALL PLATES and INSERTS

Part No	Colour	Description
T0101	White	KEYSTONE ® Wall Plate Two Port



### KEYSTONE® WALL PLATES and INSERTS

Part No	Colour	Description
T0122	White	KEYSTONE ® Wall Plate Insert Blank



### KEYSTONE® WALL PLATES and INSERTS

Part No	Colour	Description
T0123	White	Wall Plate Insert F to F Connector



### KEYSTONE® WALL PLATES and INSERTS

Part No	Colour	Description
T0147	White	Wall Plate Insert F to PAL Connector

## WALL PLATES and INSERTS

### AMDEX® MULTI-FUNCTION WALL PLATES

#### AMDEX® Mutli-function Blank Wall Plate

- may be used as Telephone Wall Mounting Plate
- rear grided for accurate drilling of holes to mount various mechanisms e.g. RCA, Posts, F Connector etc
- combine with P/N T0002 to mount S611 / S610
- supplied with Mounting Post and 6P4C solid Modular Plug



### AMDEX® WALL PLATES

Part No	Colour	Description
T0222	White	AMDEX® Wall Plate Blank with 6P4C Modular Plug



### AMDEX® WALL PLATES SHUTTERED SERIES

#### AMDEX® Patented Shuttered Wall Plate System

- allows the equipping of up to 3 Shuttered Jacks into the AMDEX® Slimline Series
- can be supplied as discrete parts or configured

### AMDEX® WALL PLATES SHUTTERED SERIES

Part No	Colour	Description
T0202	White	Wall Plate Unequipped



### AMDEX® WALL PLATES SHUTTERED SERIES

Part No	Colour	Description
DASJ001	White	Insert for Shuttered Cat.5e jack



### AMDEX® WALL PLATES SHUTTERED SERIES

Part No	Colour	Description
DASBLANK	White	Insert for Shuttered Wall Plate Blank

## WALL PLATES and INSERTS



### AMDEX® WALL MOUNTING BLOCKS

Part No	Colour	Description
F-BLK 1	White	Wall Mounting Block 35mm

Accepts AMDEX® CLIPSAL® and HPM®



### AMDEX® WALL MOUNTING BLOCKS

Part No	Colour	Description
F-BLK 2	White	Wall Mounting Block 13mm

Accepts AMDEX® CLIPSAL® and HPM®



### AMDEX® WALL MOUNTING BLOCKS

Part No	Colour	Description
F-PBC	White	Plaster Board Clip



## TOOLS and TESTING EQUIPMENT



### PUNCH-DOWN TOOLS

Part No	Type	Description
T-T0001A	Punch-down	Tool for KRONE® IDC



### PUNCH-DOWN TOOLS

Part No	Type	Description
T-T001B	Punch-down	Impact Tool (without blade) HT-3640R



### PUNCH-DOWN TOOLS

Part No	Type	Description
T-T001E	Blades	110 Blade HT-14TB for use on HT-3640R
T-T001F	Blades	Quante Blade for use on HT-3640R
T-T001G	Blades	Krone® Blade HT-14TBK for use on HT-3640R



### CABLE PULLER

Part No	Type	Description
T-T018	Cable Puller	Length 50M Capacity 500Kg L0750T



### CABLE PULLER

Part No	Type	Description
T-T017	Cable Puller	Length 30M Capacity 250kg L0530T



### CABLE PULLER

Part No	Type	Description
T-T0019	Cable Puller	Puller Attachment 120Kg T2

## TOOLS and TESTING EQUIPMENT



### CABLE STRIPPERS

Part No	Type	Description
T-T0002D	Cable Stripper	UPT /STP Stripper HT-308



### CABLE STRIPPERS

Part No	Type	Description
T-T0002E	Side Cutters	Hardened Steel Orange HT-222



### CABLE STRIPPERS

Part No	Type	Description
T-T0020	Cable Stripper	Metal Adjustable HT-325B



### CABLE STRIPPERS

Part No	Type	Description
T-T030	Cable Stripper	Stripping Tool for Flat or Round Cable 3.2—9.0 mm HT-5501B



### CABLE STRIPPERS and CRIMPERS for COAX

Part No	Type	Description
T-T002F/3	Stripping Tool	Coax Stripping Tool 3 Blade HT-322



### CABLE STRIPPERS and CRIMPERS for COAX

Part No	Type	Description
T002F/2	Stripping Tool	Coax Stripping Tool 2 Blade HT-332



### CABLE STRIPPERS and CRIMPERS for COAX

Part No	Type	Description
T-T002H	Crimp Tool	'F' Crimp Tool RG59 - RG6 - RG11 HT-106M



### CABLE STRIPPERS and CRIMPERS for COAX

Part No	Type	Description
T-T002J	Compression Tool	'F' Compression Tool HT-548A1

## TOOLS and TESTING EQUIPMENT



### CRIMP TOOL for MODULAR PLUG

Part No	Type	Description
T-T007	Crimp Tool	6 Position HT-2196



### CRIMP TOOL for MODULAR PLUG

Part No	Type	Description
T-T010	Crimp Tool	6 - 8 Position HT-568



### CRIMP TOOL for MODULAR PLUG

Part No	Type	Description
T-T012	Crimp Tool	4 -6 Position HT-546



### CRIMP TOOL for MODULAR PLUG

Part No	Type	Description
T-T002A	Crimp Tool	Ratchet 3-4-6-8 Way and DEC HT-2200R8



### CRIMP TOOL for MODULAR PLUG

Part No	Type	Description
T-T002C	Crimp Tool	4 Position Generic



### OPTIC FIBRE TOOLS

Part No	Type	Description
T-T029	Fibre Optic	Microscope with Light GM-60



### OPTIC FIBRE TOOLS

Part No	Type	Description
T-T016	Fibre Optic	Fibre Tool Kit

## TOOLS and TESTING EQUIPMENT



### TEST EQUIPMENT

Part No	Type	Description
T-TEST01	LAN Tester	LED Display



### TEST EQUIPMENT

Part No	Type	Description
T-TEST02	LAN Tester	LCD Display



### TEST EQUIPMENT

Part No	Type	Description
T-TEST03	Test Lead	Buttinski Lead 2 Pole for Krone® Disconnect Module



### TEST EQUIPMENT

Part No	Type	Description
T-TEST04	Wire Tracer	'F' Set



### TEST EQUIPMENT

Part No	Type	Description
T-TEST05	Digital Multi-meter	Basic DMM with Buzzer



### TEST EQUIPMENT

Part No	Type	Description
T-TEST06	Optic Fibre	TXR Mini 1300mm Fibre Continuity Tester



### TEST EQUIPMENT

Part No	Type	Description
T-TEST07	LAN Tester	Tester with 12 Remotes and Patch Leads

## TELEPHONES



### TELEPHONES

Part No	Colour	Description
TELE:PH3020	Beige	2 Piece 13 memory back lit new call button

## ANCILLARY



### LINE ISOLATION UNIT and SIDE LEADS

- can be used in-line or fixed position
- music side leads and system side leads via modular fitting
- for quick and simple connecting

Part No	Type	Description
<b>T0054</b>	Line Isolation Unit	Mini LIU plus Lead with 3.5mm Mono Plug



### LINE ISOLATION UNIT and SIDE LEADS

Part No	Type	Description
<b>T0049</b>	System	Side Lead 1M with P605 - 6P4C Modular Plug



### LINE ISOLATION UNIT and SIDE LEADS

Part No	Type	Description
<b>T0062</b>	System	Side Lead 1M with RCA - 6P2C Modular Plug



### LINE ISOLATION UNIT and SIDE LEADS

Part No	Type	Description
<b>T0148A</b>	System	Side Lead 1M with 6P2C - 6P2C Modular Plug



### LINE ISOLATION UNIT and SIDE LEADS

Part No	Type	Description
<b>T0137</b>	System	Side Lead 1M with 3.5 Mono R/Angle Plug - 6P2C Modular Plug



### LINE ISOLATION UNIT and SIDE LEADS

Part No	Type	Description
<b>T0137S</b>	System	Side Lead 1M with 3.5 Stereo R/Angle Plug - 6P2C Modular Plug

## ANCILLARY



### LINE ISOLATION UNIT and SIDE LEADS

Part No	Type	Description
<b>T0046</b>	Music	Side Lead 400mm with 6.35mm Stereo Plug - 4P2C Modular Plug



### LINE ISOLATION UNIT and SIDE LEADS

Part No	Type	Description
<b>T0044</b>	Music	Side Lead 400mm with 3.5mm Stereo Plug - 4P2C Modular Plug



### LINE ISOLATION UNIT and SIDE LEADS

Part No	Type	Description
<b>T0062A</b>	Music	Side Lead 400mm with RCA Plug - 4P2C Modular Plug



### LINE ISOLATION UNIT and SIDE LEADS

Part No	Type	Description
<b>T0061</b>	Music	Side Lead 400mm with 3.5mm Mono R/Angle Plug - 6P2C Modular Plug

**ANCILLARY****LOUD SOUNDING ALARM**

Part No	Type	Description
T-LSA		Loud Sounding alarm

**LOUD SOUNDING ALARM**

Part No	Type	Description



## WARRANTY STATEMENT

- ALL AMDEX BRAND PRODUCTS COMPLY WITH ALL RELEVANT STANDARDS.
- ALL AMDEX PRODUCTS ARE WARRANTED TO BE FREE OF DEFECT AT THE TIME OF DELIVERY.
- ALL AMDEX PRODUCTS ARE GUARANTEED FOR 20 YEARS.
- WARRANTY IS APPLICABLE WHEN PRODUCTS ARE INSTALLED IN A WORKMAN LIKE MANNER IN ACCORDANCE WITH THE APPROPRIATE STANDARD.