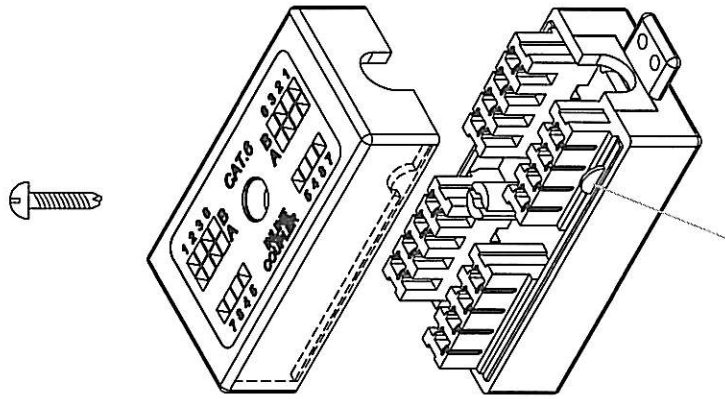
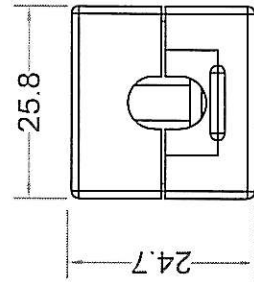
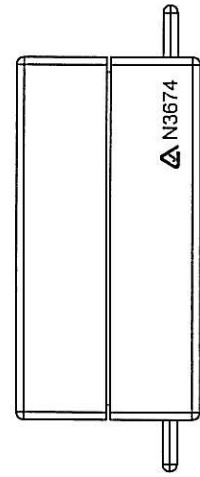
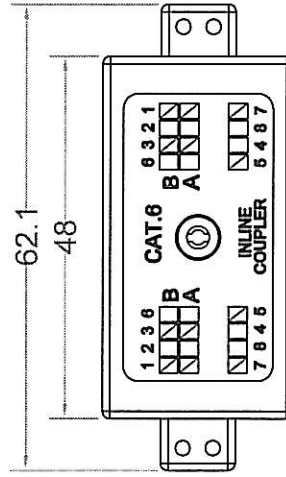


Cat.6 INLINE COUPLER (UTP)

Color coding information
T568B: 1---WH/OR 2---OR 3---WH/GN 4---BL 5---WH/BL 6---GN 7---WH/BR 8---BR
T568A: 1---WH/GN 2---GN 3---WH/OR 4---BL 5---WH/BL 6---OR 7---WH/BR 8---BR

Dimensions:



Direction Key

Performance:

Meets Cat.6 EIA/TIA 568B.2-1 Standard.

Materials:

Plastic Body : Fireproof ABS UL-94V0
PCB : FR-4 / 1.6mm UL-94V0
IDC Body : Fireproof ABS UL-94V0
IDC Pin : Bronze & Tinned

Label Color Code : T568 A/B

IDC Description : For 22-26 AWG.

For 110 or Krone punch-down Tool

Electrical Specifications:

Insulation Resistance : 500M ohms (min.)
Contact Resistance : 20m ohms (max.)
Current Rating : 1.5 Amps .
DC Resistance : 0.1 ohm (max.)
Withstanding Voltage : 1000 VAC RMS @ 60Hz / 1 min.

Mechanical Specifications:

IDC Punch Down Cycle : Over 250 Cycles (min.)

Operation Temperature : -40 ~ +70 degree / C

DRAW NO.:	ITEM NO.:	DA215-C6
UNIT: m/m	APPR	G.O.
SCALE:	CHECK	CUSTOMER:
	DESIGN	DATE:
	TOLERANCE:	· ± 1 · X ± 0.2 · XX ± 0.15