

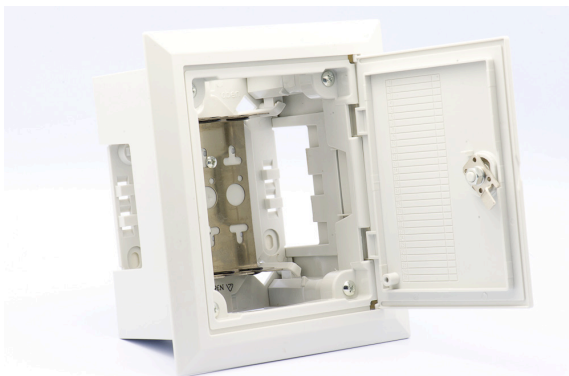
30, 50, 100 Pair Enclosures

The AMDEX range of enclosures include 30, 50 and 100 pair. All of the enclosures come complete with a backmount frame fitted but are unloaded. A 30 and 50pr recessed is also available if wall flush mounting is required. The AMFIL 10pr disconnection module can be used with these frames.



← 30pr backmount enclosure with removable lid

100pr backmount enclosure with removable lid



← 30pr recessed, backmount enclosure for flush wall mounting

30, 50, 100pr Enclosures